



December 2016

Barcroft News

Vol 114, Issue 4

Ten Shrubs with Winter Interest

By John Gunn

at Mid-Atlantic Gardener

Many shrubs with winter interest could be perfect candidates for your yard, and some on our list have the added benefit of being natives. Who wouldn't enjoy beautiful blooms, foliage, and fruit; interesting forms or branch structures; fragrances, and other impressive attributes of these shrubs during the cold winter months?

Les Parks, Curator of Herbaceous

Plants at Norfolk Botanical Garden, led "The Tidewater Garden In Winter" lecture and tour on November 17, 2016 at the Gardens in Norfolk, Virginia. I asked Les if he'd share his favorite shrubs with winter interest. Here's his response (not in ranked order).

Winterhazel (*Corylopsis species*) – There are several species of winterhazel, all of which have clusters of lantern-like yellow flowers that hang from bare branches in early March. Size varies by species, but they typically grow six to 10 feet tall, and do

best in light shade to full sun.

Winter Daphne (*Daphne odora*) – This evergreen is legendary for two things: its flowers' intensely sweet aroma, and its finicky nature. The flowers are typically pink in bud, opening to white in February. The most common cultivar, 'Aureo-marginata,' has a subtly variegated leaf. Give it light shade and excellent drainage. It will slowly reach three feet tall.

Continued on Page 6

PLEASE JOIN US FOR BARCROFT'S Annual Holiday Party

**THURSDAY, DECEMBER 1
7 P.M.**

FEATURING FOOD, CHILDREN'S ACTIVITIES,
SINGING AND A VISIT FROM
A SPECIAL GUEST FROM THE NORTH POLE.

PLEASE BRING A DESSERT TO SHARE.

Barcroft News

Editor: Alyssa Ford Morel
703-907-9318,
editor@bscl.org

Advertising: Jennifer Tomlinson
jaitomlinson@yahoo.com

Publisher/Mailing: Christine Hopkins,
chopkins4149@gmail.com
703-350-2101

Next Deadline: December 15

BSCL Officers

President: Chris Kupczyk, chris@bscl.org

Vice President: Joe Knarich, joe@bscl.org

Treasurer: Jennifer Lis
jenlis@comcast.net

Recording Secy.: Christine Hopkins,
chopkins4149@gmail.com

Membership Secy.: Joanne Rodewald
chopkins4149@gmail.com

Board Members: Michael Behringer, Keith
Fred, Daniel Weir, Eric Parker

Contacts and Committees

Community House Rental Manager:
Barbara Swart
barcrofthouserental
@yahoo.com

Web: Daniel Weir,
webmaster@bscl.org

Fundraising: Chris Ditta

Landscaping: Scott Brinitzer, 703-892-0308

Traffic Committee: Vacant

4th of July Parade: Heather Meade and Jim Moran

Columbia Pike: Keith Fred, Charlie Smiroldo

Demeter House: Darlene Mickey

Parks: Shirley Gay

Signs: Glen Li

NCAC Rep.: Deborah Wood
wood_deborah@yahoo.com

NCAC Alternate: Neal Martin

Arlington Civic Fed. Delegates: Eric Harold, Christopher Hoh, Chris Kupczyk, Randy Swart
Alternates: Joseph Knarich, David Michelson, Mark Wigfield

Visit Us Online: www.bscl.org

Go Green with Public Transportation

By Markarius Nealis

Arlington is now even more accessible with public transportation. Metro has added several new express bus routes and has started to upgrade their aging train system. ART buses schedule has been changed to come more frequently.

If you are a student you should consider getting a student bus pass. The pass allows you to ride ART buses for only 85¢.

If you need help with finding information on how to go somewhere, consider using Metro/ART trip planner. There are also tons of transit apps. (Moovit is my favorite.)

Also consider biking. You can find bike maps that show bike lanes and trails either online or at commuter stores. The website carfreediet.com provides tons of information as well as events to help you get acquainted with biking in Arlington. Don't forget to wear lights, a helmet, and bright clothes. Always respect the rules of the road and be a predictable rider. •



December Barcroft Elementary Update

By Jennifer Weber, PTA Secretary

Please join us on Saturday, December 3 for the Snowball Stride 5K. This fun, family-friendly event starts at Barcroft Elementary School and is run primarily on the W&OD trail. Prizes are awarded for best holiday race costume and top male and female race winners by age categories. Registration is \$25 for ages 15 and older and \$15 for 14 and under. Registration is available at <http://www.active.com/arlington-va/running/distance-running-races/barcroft-snowball->

[stride-5k-2016](http://www.active.com/arlington-va/running/distance-running-races/barcroft-snowball-). All proceeds go to the Barcroft PTA. Lace up those running shoes, grab your holiday sweatshirt and run or walk with us on December 3!

Barcroft students and staff kicked off the second semester in mid-October. We had our first Spirit Day on Friday, October 28 and it was also a pajama day! Barcroft PTA held a Family Sleepfauuxver that evening and Barcroft family and friends gathered to watch movies in the gym and multipurpose room. November brought the launch of Eagle Eyewitness News,

an exciting new method for morning announcements.

Congratulations to Barcroft teacher Kristin Shymoniak who was recognized as an outstanding education leader by the School Superintendents Association. She is one of seven finalists for the organization's 2017 Women in School Leadership Awards. We are so proud! ●



Students and staff all enjoyed pajama day on October 28.

Dues News: December Update

By Joanna Rodewald, Membership Secretary

I am writing this article in mid November but already have a calendar full of holiday commitments for December. I imagine this is a busy time for everyone. But I hope before you get preoccupied with your shopping, meal planning and social engagements you will take the time to renew your BSCL 2016/17 membership -- or join if you are not already a member. Dues are still only \$5 per individual or \$10 for

a family membership. The application form is provided on page 5 of this newsletter or online at our website (<http://www.bscl.org/membership>).

Barcroft is a vibrant community and your dues help maintain the Community House and fund many festive activities that happen in the neighborhood. Please join the 144 households that have already given their support. Wishing everyone joy and peace in the upcoming month. •



Before



After



Guiding you home and building relationships for life

Contact Justin today to make your dream home a reality!

Justin Volentine
Senior Loan Officer
NMLS ID#: 177089
Office: 703.459.9895
Cell: 571.228.3852
jvolentine@icmtg.com
TheVolentineTeam.com



Company NMLS ID#: 56323 | McLean NMLS ID#: 320939
6829 Elm Street, Suite 200A | McLean, VA 22101
www.nmlsconsumeraccess.org



BSCL MEMBERSHIP APPLICATION or RENEWAL

Sept 2016 - Aug 2017

Please complete the entire form and return with dues

To: Barcroft School & Civic League
c/o Treasurer
811 South Taylor Street
Arlington, VA 22204

Check One:

New Member Application
 Membership Renewal

Individual Membership (\$ 5.00) \$ _____

Couple/Family Membership (\$10.00) \$ _____

Additional Tax Deductible Contribution to
the Community House Conservation Fund \$ _____

Total (Please make check payable to BSCL)

\$ _____

Check Number _____

Name: _____

Address: _____ Apt: _____

Home Phone: (_____) _____ Cell Phone(s): (_____) _____

E-Mail Address(es): _____

I/we would like to volunteer to help with:

Snow Removal for Elderly/Disabled

Yard Work for Elderly/Disabled

Barcroft Players

Food Events (Dinners, Cook-outs, etc.)

Distribution (Newsletters, Flyers, etc.)

4th of July Parade & Picnic

Grant Writing

One-Time Efforts (as they arise)

Serve on a Committee -- Specify which: _____
(*Crime Resistance, Parking, Traffic*)

Other (please specify): _____

Ten Shrubs with Winter Interest, continued

Continued from Page 1

Paperbush/Edgeworthia (*Edgeworthia chrysantha*) – In November and December, this plant is graced with downy silver buds that hang from bare branches. In February the buds open to clusters of sweetly fragrant golden flowers. Though tolerant of sun, they prefer light shade and will reach six feet tall and wide. One of the best winter-blooming shrubs.

Cork Tree/Winged Euonymus (*Euonymus phellomanus*) – Once the leaves fall from this plant you can appreciate its unusual wide, flat “wings” along its stems. When backlit by the low winter sun, these wings have a beautiful tawny glow. In fall, lipstick-pink seed capsules emerge holding bright orange fruit. Winged euonymus prefers full to partial sun and will slowly reach six to 10 feet.

Witchhazel (*Hamamelis x intermedia*) – Although the mid-Atlantic region is home to the fall-blooming common witchhazel (*H. virginiana*), the showiest winter blooms come from this group of Asian hybrids. There are number of colors available, several selections have a delightful fragrance, most will reach 10

to 15 feet and all of them have colorful fall foliage, as well. Light wooded shade is best. Another native alternative is *Hamamelis vernalis*.

Winterberry Holly (*Ilex verticillata*) – This native holly is unlike others in that it is not evergreen, but that just makes the bright red fruit really stand out in winter, especially when dusted with snow. Although birds will eat winterberry, they usually leave it for late in the season. Tolerant of wet soils, it prefers full to partial sun, and grows eight to 10 feet tall.

Winter Jasmine (*Jasminum nudiflorum*) – Often mistaken for forsythia, winter jasmine blooms much earlier, usually in January. Although it is deciduous, the stems remain green through winter. It prefers full sun in lean soils, where it will reach three to four feet tall with a sprawling habit (not for the obsessively neat gardener).

Winter Honey-suckle (*Lonicera fragrantissima*) – This shrub looks nothing like the more vining members of its family, nor is it a great beauty to behold. However, its ivory white flowers have a deli-



Winterberry Holly at the Glencarlyn Library Community Garden with a Mockingbird.

Continued on Page 7

Ten Shrubs, continued

Continued from Page 6

ciously sweet fragrance, reminiscent of a bowl of Fruit Loops cereal. It will grow six to 10 feet tall and prefers full to partial sun.

Baby's Breath or Gold Thread Spirea (*Spiraea thunbergii*) – This is the first spirea of the season to bloom, typically in February or early March. 'Fujino Pink' has distinctive pink buds opening to blush colored flowers. 'Ogon' has pale pink buds opening to white flowers, followed by chartreuse foliage. This plant blooms best in full sun and can reach five to six feet tall and wide.

Stachyurus (*Stachyurus praecox*) – Although this plant is not readily available at

most garden centers, it is worth seeking out. In late February to early March, its buds begin opening to form long chains of small flowers, cloaking the tree with pale yellow fringe. It will grow well in full sun or partial shade, and can reach 10 feet tall.

John Gunn is a longtime Arlington resident and certified Master Gardener. He's also the owner and publisher of Mid-Atlantic Gardener at www.MidatlanticGardener.com, a free website for finding regional gardening news, upcoming gardening, and gardening tips and how-to information from people who are experts in the Mid-Atlantic region. •



Celebrate the Birth of Christ With Us!

St. John's Episcopal Church is a vibrant congregation with a big heart. We are an inclusive and welcoming community of faith where everyone is supported in their spiritual growth and questions and discussion are always welcome.

- The Reverend Ann Barker, Rector

Sunday Worship Services
8 am and 10 am

Sunday Christian Education
Adults 9 am — Youth 10 am

All are welcome to all services and activities!

- | | | |
|--------------------|-------|--|
| December 11 | 10 am | Children's Christmas Pageant at the 10 am service |
| December 24 | 5 pm | Christmas Eve Service with carols and a children's message |
| | 11 pm | Christmas Eve Service with carols |
| December 25 | 10 am | Christmas Day Service with carols |
| <hr/> | | |
| January 21 | 7 pm | Family Game Night - Bring your family, your favorite board game and a box or can of food for AFAC. |

St. John's Episcopal Church

415 S. Lexington Street Arlington, VA 22204 703-671-6834 stjohnsarlingtonva.org



Holiday Greetings from OSLS

By OSLS National Junior Honor Society

One of our chapel offerings for the months of November and December will go to Doorways for Women and Families. Doorways provides immediate and long-term, safe housing for women and families fleeing domestic violence and homelessness. In addition, they also deliver holistic support services that teach individuals the skills and tools necessary to lead safe, independent lives. It is the mission of Doorways for Women and Families to create pathways out of domestic violence and homelessness leading to safe and stable lives. Please consider helping this wonderful organization in your own way. Visit their website at www.doorwaysva.org for more information.

Many of us purchase items on Amazon.com. Did you know that if you go to Amazon.smile, you can purchase the same items and a small portion will be designated back to Our Savior Lutheran School? Just list Our Savior Lutheran School as your designated charity when you sign on to Amazon.smile. Every time

after that Amazon.smile will automatically contribute a portion of your purchase to our school. It's super easy. Thank you to everyone who supports us.

The children of Our Savior Lutheran School invite the neighborhood to their annual Christmas program on Friday, December 16. The students have been working hard on learning songs and want to spread the love of Christmas through their angelic voices. The program, "Christmas Remembered," will be held at Our Savior Lutheran Church, located right across the parking lot from our school, with performances at 11 a.m. and 7 p.m. The event is free and everyone is welcome to enjoy this Christmas tradition as we celebrate.

Please join us at Our Savior Lutheran Church for Christmas worship services. We have Christmas Eve services on December 24 at 5 and 7 p.m. There will also be a Christmas Day service on December 25 at 10 a.m. We would love to have you come and worship with us as we celebrate and rejoice. ●

Holiday House at Fort CF Smith

The 11th annual Holiday House Craft Show and Sale will be held at the Hendry House at Fort CF Smith Park at 2411 North 24th Street, Arlington, from December 3 to 11. The hours are 10 a.m. to 5 p.m. on Saturdays

and noon to 5 p.m. on Sundays. Wednesday, December 7 the show will be open from noon to 8 p.m. All items are created by local artisans. This is your last chance to get a unique gift. Questions? Call 703-243-7329. ●

Why Plant Native Plants?

By Plant NOVA Natives Campaign

Do you want to save the environment? Start by planting native plants.

The future of songbirds, frogs, and all the other wildlife we love is dependent on our making room for their habitat on our properties. The crucial first step for creating habitat is to use native plants, because most of the caterpillars and insects that larger wildlife eat can only themselves eat the native plants with which they evolved. They are incapable of surviving in a landscape dominated by turf grass or other plants that were introduced from other parts of the world,

which are increasingly dominating our land.

Do you also want a beautiful property with little maintenance required? Native plants are the ones for you! There are hundreds of native species to choose between, all of them adapted to our particular growing conditions and therefore requiring no fertilizer or pesticides, and watering only until established. Many are familiar to any gardener -- phlox, dogwood, redbud, and black-eyed Susan are examples.

All the information you need to get started in Northern Virginia can be found at www.plantnovanatives.org. ●

Still the #1 Remodeling Contractor in Arlington

Pulling more permits in Arlington than any other contractor



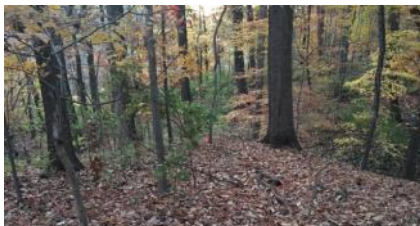
Specializing in Arlington Homes

GET A FREE QUOTE TODAY
703-536-0900 | CookBros.org

Leave the Leaves to the Trees

By Ann Marie Douglass
Arlington Regional Master Naturalist and
Tree Steward

Do you want to work less, save money and live more with the rhythms and cycles of Nature? Leave your leaves to decompose in your lawn! A tree's living cycle depends on the decomposition of its own and neighboring leaves to nourish its roots throughout the winter. Essentially, raking takes your tree's only winter/



The leaf cover in the author's own yard mimics the woods bordering the Barcroft neighborhood.

spring meal away. Look to the balance in the woods for validation and inspiration that Nature has got this covered. We can sip some warm cider and enjoy the beauty of Autumn, knowing that our leafy lawn is just as Nature intended. ●

Arlington Historical News

Arlingtonians are invited to visit the Arlington Historical Museum. The hours are Saturday and Sunday 1 to 4 p.m., and Wednesdays 12:30 to 3:30 p.m. The Arlington Historical Museum, owned and operated by the Historical Society, is located at 1805 South Arlington Ridge Road. The two-story brick structure was built in 1891 as the Hume School, named for Frank Hume who gave some of the property for the school. It is the oldest school building in Arlington County.

The museum got a new roof during

the week of October 24. The long-overdue roof was coordinated by Robert White, Board member and docent.

The Ball-Sellers House Museum is closed for the winter.

The Arlington Historical Society invites you to support local history by becoming a member, attending a fun and informative programs, and visiting our museums. Check out the latest news and programs on its Facebook page, Arlington Historical Society. ●

Neighbor to Neighbor Listings

These listings are free to BSCL members, and run on a space-available basis. The listings run for three issues unless removal, renewal or update is requested. Email listings and renewals to editor@bscl.org.

Becca Bean Babysitter: High school senior available nights and weekends. Call 571-344-4134 or email: RebeccaBean@gmail.com. •

Kevin's Media: Will convert VHS tapes, TC30 tapes, Laserdiscs and 35mm photograph slides to DVD. Professional packaging/artwork included upon prior request. Please inquire for rates. Email kevinsmedia118@gmail.com or text/call 703-919-7605.



Juliet's Housecleaning Service
Honest, more than 10 years experience with Excellent Barcroft-area References
LOW RATES!
Weekly, biweekly, monthly, or one-time cleaning.

**Call anytime: 703-628-3434,
703-354-3225, or
571-236-3700**





15th Annual Messiah Sing-Along in Alexandria

Part 1 and Hallelujah Chorus

Guest Soloists

Laura Whittenberger, soprano; Mary Burke, alto;
Chuanqi Shang, tenor; Christopher Edwards, bass

*****YOU ARE THE CHORUS*****

Georg Philipp Telemann *Concerto in G Major for two Violas, TWV 52:G3*

Mary Dausch and Elizabeth O'Hara Stahr, violists with the Amadeus Orchestra
Dr. Louise C. Wilson, Conductor

Sunday, December 4, 2016 at 4:00pm

Fairlington United Methodist Church, 3900 King St., Alexandria, VA 22302

Info: 703-671-4057 www.fairlingtonumc.org Free Admission & Parking
Bring your own Messiah score or purchase a G. Schirmer edition - \$9.00 at the door



Barcroft School and Civic League
800 South Buchanan Street
Arlington, VA 22204

Save Money by Sealing those Holes and Cracks this Fall

Task: Locate and seal cracks and spaces that let heat out and cold air in—along baseboards, wall/ceiling junctures, windows and doors, lighting fixtures, switches, and electrical outlets. Energy savings from reducing drafts range from 5% to 30% per year, according to the U.S. Department of Energy.

Shortcut: Try these tricks to spot energy leaks. At night, ask a partner to walk outside while you turn off all lights and shine a flashlight along doors and windows. The light will illuminate large cracks. Small ones won't likely show up. For those, light a candle or incense stick and pass it along potential leak areas. If the flame or smoke wavers, you've got a leak. Call in the pros: A home audit that finds all the nooks and crannies where energy escapes costs \$500 on average. Painters and/or Handymen (\$50 to \$100 an hour) can seal gaps with caulk and install weather stripping.

A recent article in Northern Virginia Magazine highlighted the best places by zip code to live in the region; based not only on the residential real estate market, but also on what each neighborhood has to offer. Next door neighbor Arlington Forest was on the list, and here is a quote: "Ballston, with Buckingham and Arlington Forest in Arlington County, offers the best of urban and country life in one place. (I would add Barcroft to that list as well!) To read the full article visit our blog at caseyoneal.com/blog/zips-that-are-hip.

FREE Notary for Barcroft Residents!
Casey O'Neal, Associate Broker
RE/MAX Allegiance 703-217-9090
Curious about your home's value? Visit
www.CaseyOneal.com or call me
Put our 31 years of experience to work for YOU!